



Oak Structures Ltd



Index

- Page 3 – About Us
- Page 4 – [Endorsements](#)
- Page 5 – [Yorkshire](#)
- Page 8 – [Cambridgeshire](#)
- Page 11 – [Cheshire](#)
- Page 14 – [Wiltshire](#)
- Page 17 – [Oxfordshire](#)
- Page 20 – [Conservatory](#)
- Page 21 – [Bespoke Structures](#)
- Page 25 – [Extras](#)
- Page 26 – [Contact](#)
- Page 27 – [Locations](#)

About Us

- Based in Cheshire, Oak Structures Ltd aims to provide high quality oak buildings and structures at an affordable price.
- A core team of joiners can manufacture and install both standard designs and bespoke structures.
- We can work alongside builders, roofers and architects to plan and create structures to suit your needs and budget.
- We are specialists in solid oak framed buildings such as oak framed garages, car barns, and outbuildings; oak framed porches, conservatories and other bespoke structures.
- Any number of bays, changes of direction to form L and Courtyard shapes are possible. These buildings can be adapted for many uses such as garden office, over swimming pools, dog kennel or simply to store that prized classic car.
- We can supply kit only (about 40% of customers choose this option); supply kit and erect on your base leaving it ready to roof (again about 40% choose this); supply and erect on your base and complete cedar shingle roof (about 5%).
- For local customers we can complete the job from start to finish, including base and groundworks (this is about 4% of our jobs).
- For a few customers we have supplied the full kit but put up the oak frame only, leaving the softwood, cladding and roofing to be completed after we have left. This is a reduced price from the full kit but has been a good compromise.

Endorsements

'Many thanks for all your work, we are really pleased with the garage , just waiting for builders to sort the roof

Tell your guys that we were impressed with the product and workmanship. It was installed quick

With no mess .'

Peter Eaton

'We found it easy to assemble and we are very please with it. We have had many comments on how good it looks.'

Mr and Mrs Wilkinson

'Many thanks for a cracking job done'

Ian Buckley

'What a fabulous job – we are really pleased with it'

JMC Builders

'Just want to say thanks for the great work you guys did with the oak porch for us. No end of people have commented on how well the structure looks and it really looks well as you drive up the drive now.'

G Wilkinson

'Thank you so much for such an excellent service. I am absolutely delighted with the finished product and couldn't be more pleased with the way Clint and you have dealt with me as a customer, thank you.'

Nick Smith

'The building is looking good and a number of people have commented... I am happy to recommend your firm's work. Your men were friendly and helpful, as Clint and yourself have been.'

Glyn Roberts

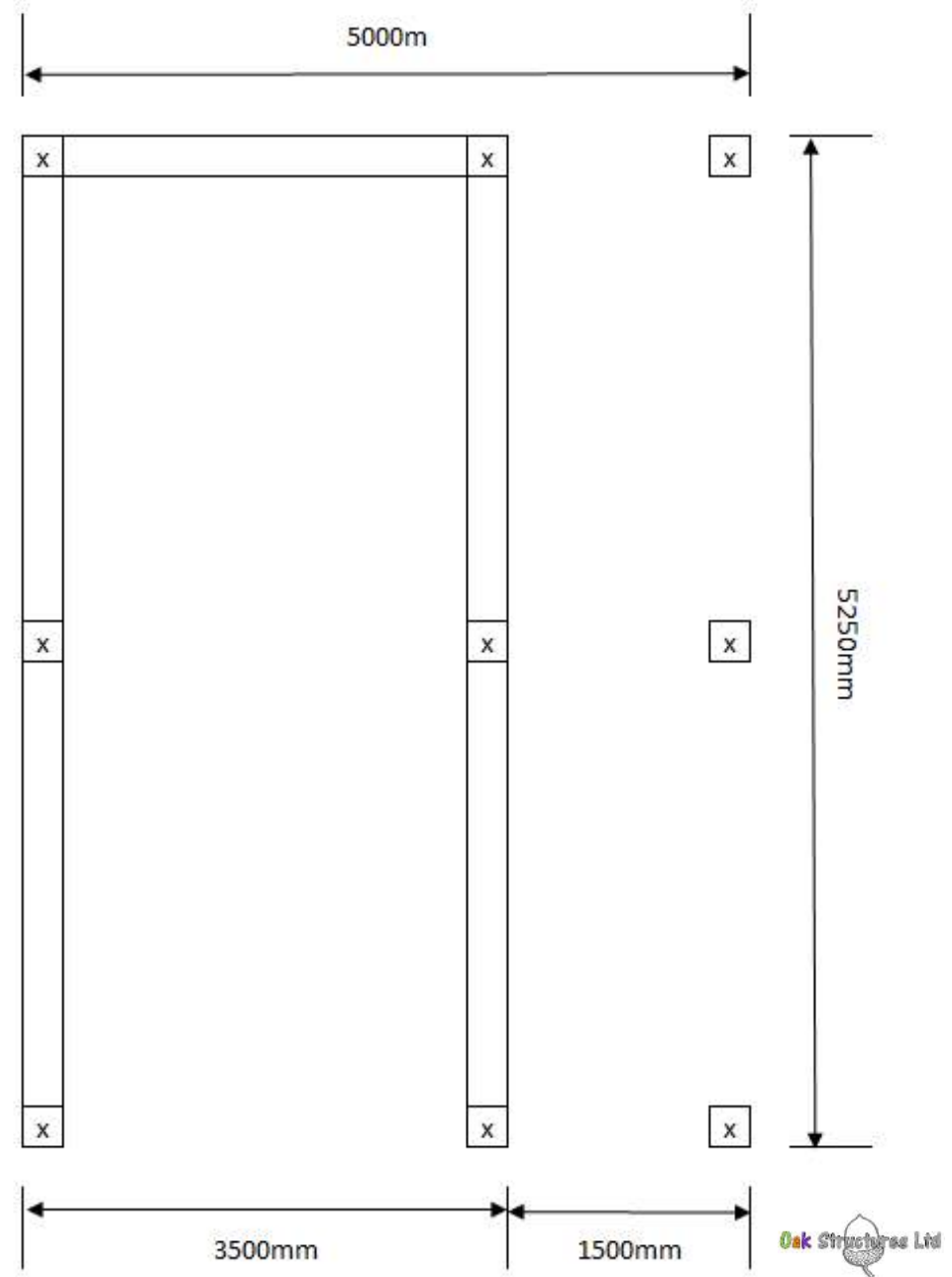
Yorkshire

Single Bay with Logstore



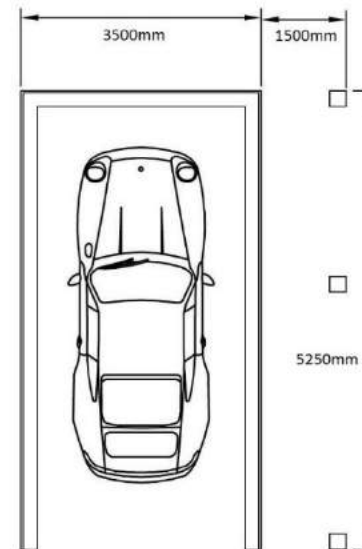
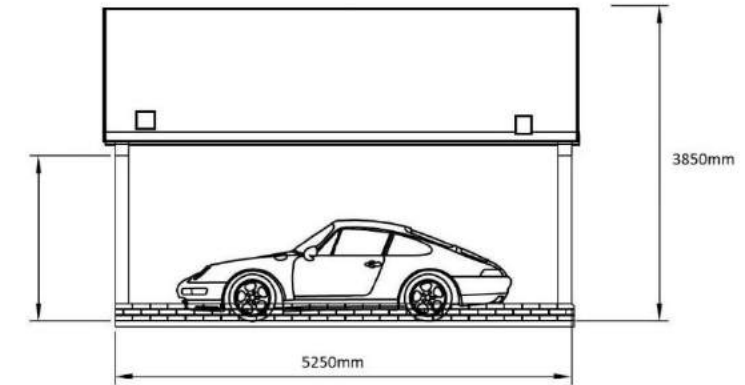
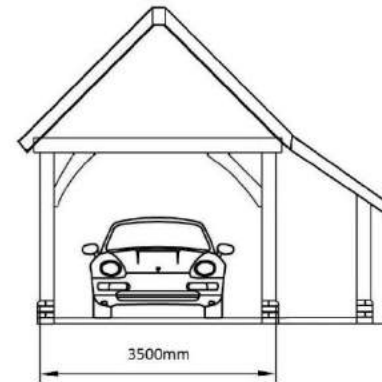
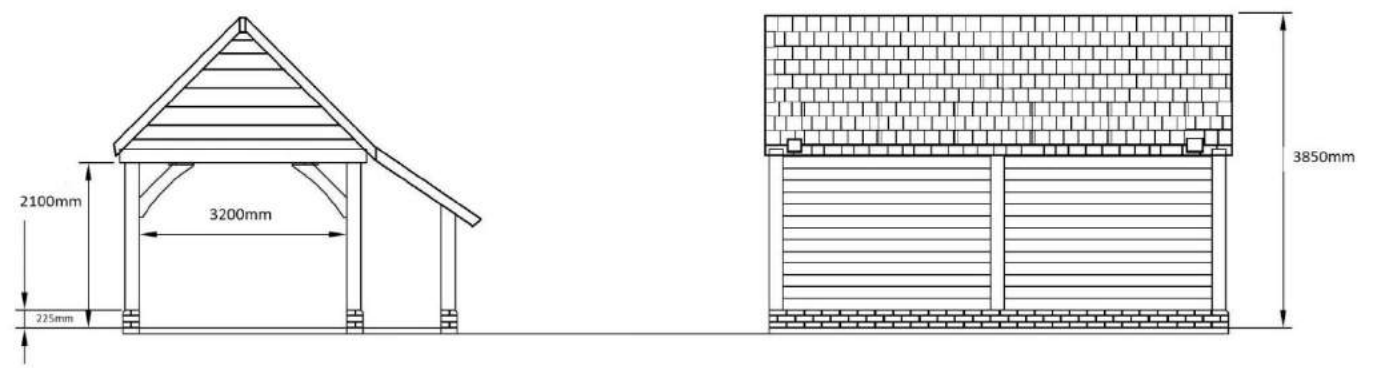
Base Plan

- This is a standard base plan for the Yorkshire.
- The logstore can be on either side or both!
- We are flexible with sizes, so if you need it bigger or smaller just let us know.



Elevation Plans

- These are the elevation plans for the Yorkshire.
- Please feel free to amend the plan to suit your needs and send back to us.



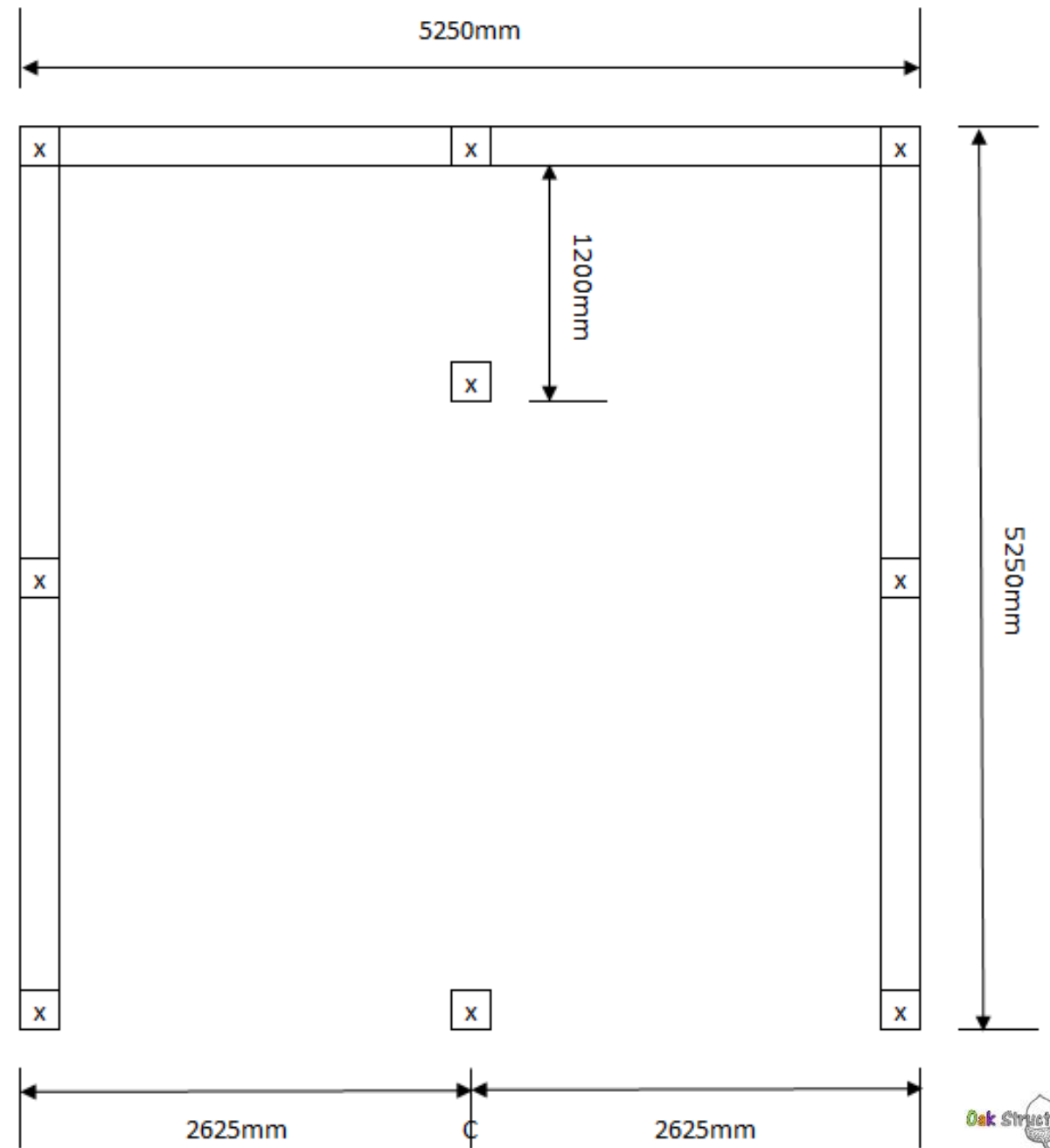
Cambridgeshire

Two Bay Car Barn



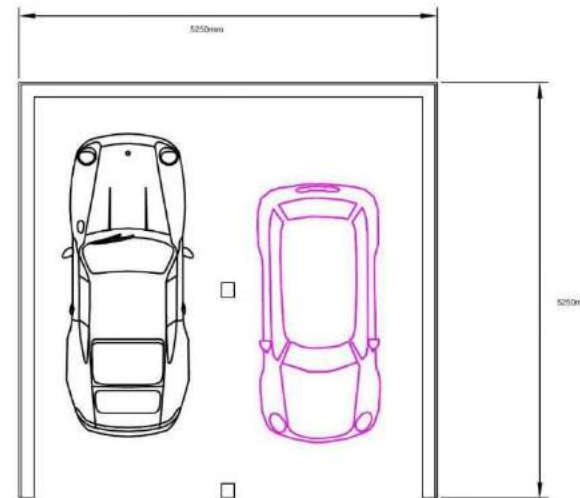
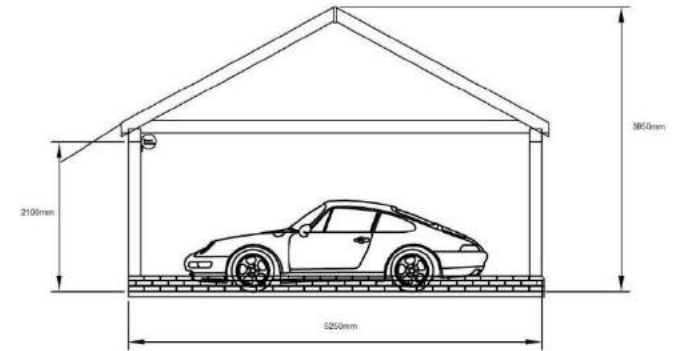
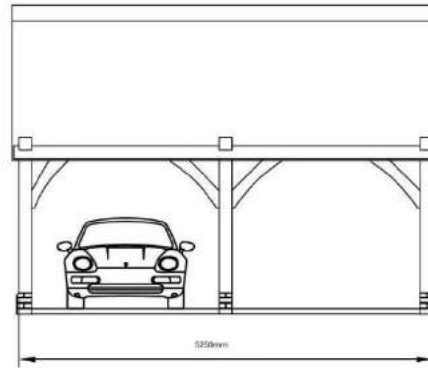
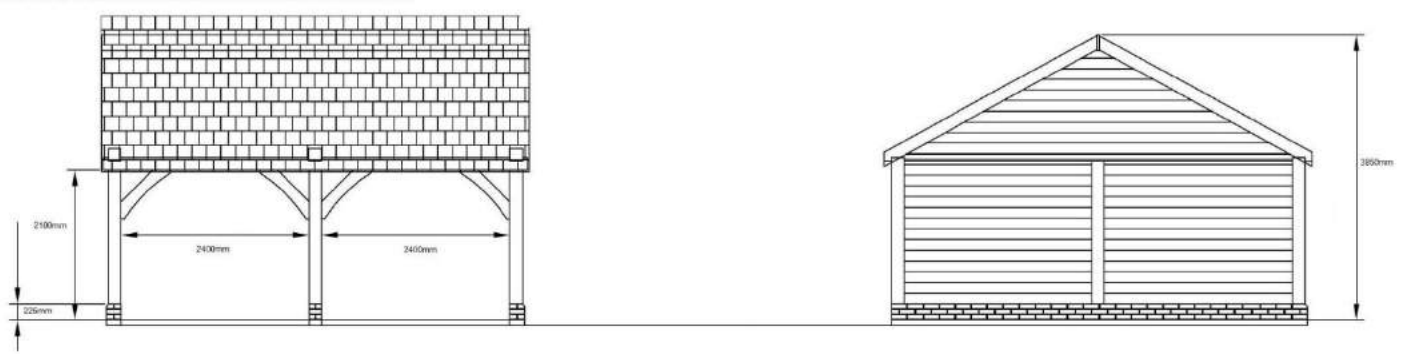
Base Plan

- This is a standard base plan for the Cambridgeshire.
- A logstore can be on either side.
- We are flexible with sizes, so if you need it bigger or smaller just let us know.



Elevation Plans

- These are the elevation plans for the Cambridgeshire.
- We can add a logstore or enclose a bay.
- Please feel free to amend the plan to suit your needs and send back to us.



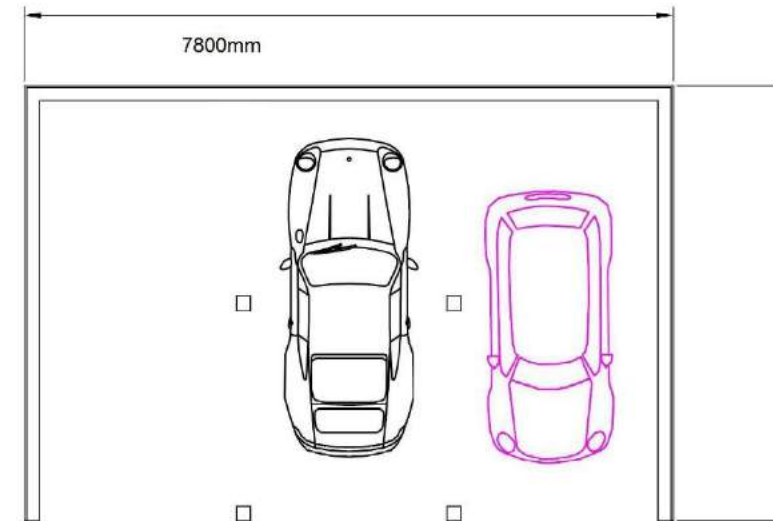
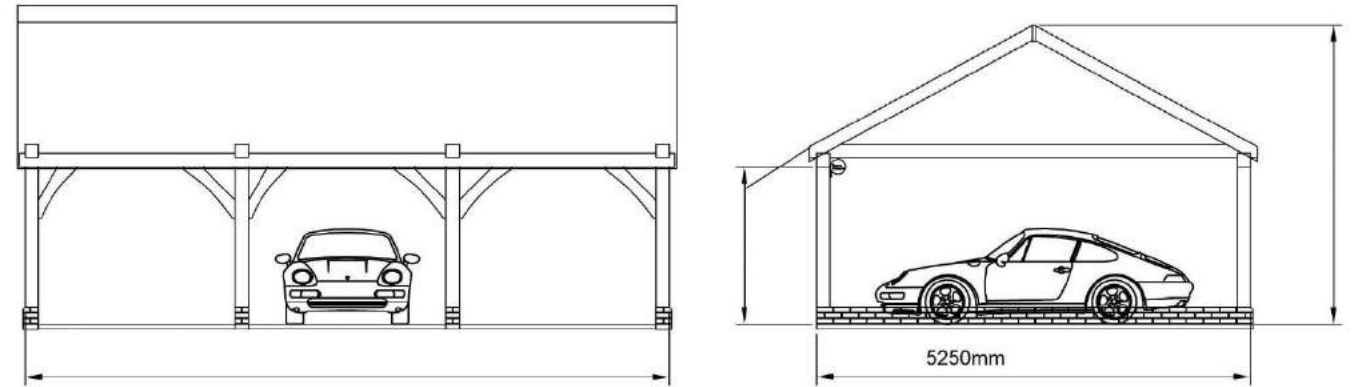
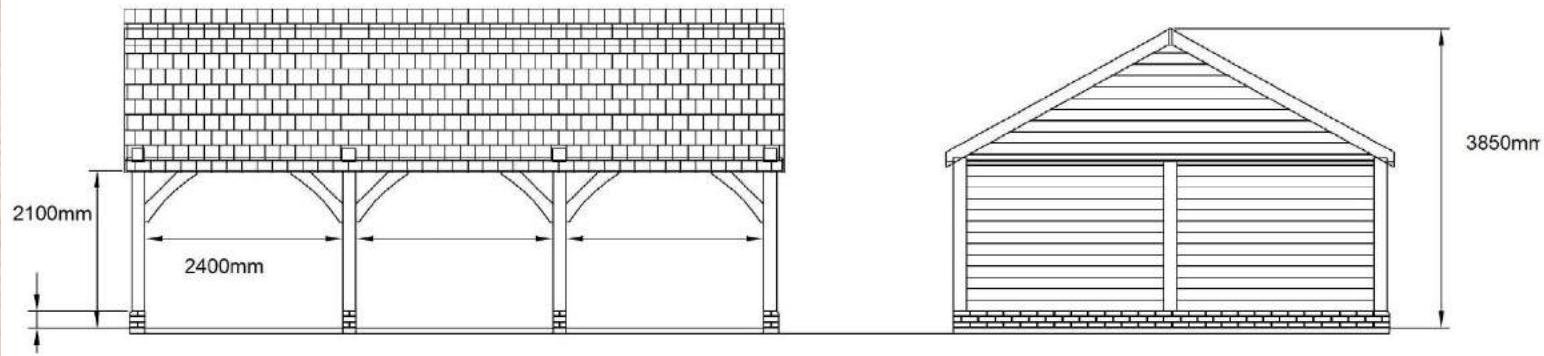


Cheshire

Three Bay Car Barn

Elevation Plans

- These are the elevation plans for the Cheshire.
- We can add logstores or enclose one or more bays.
- Please feel free to amend the plan to suit your needs and send back to us.



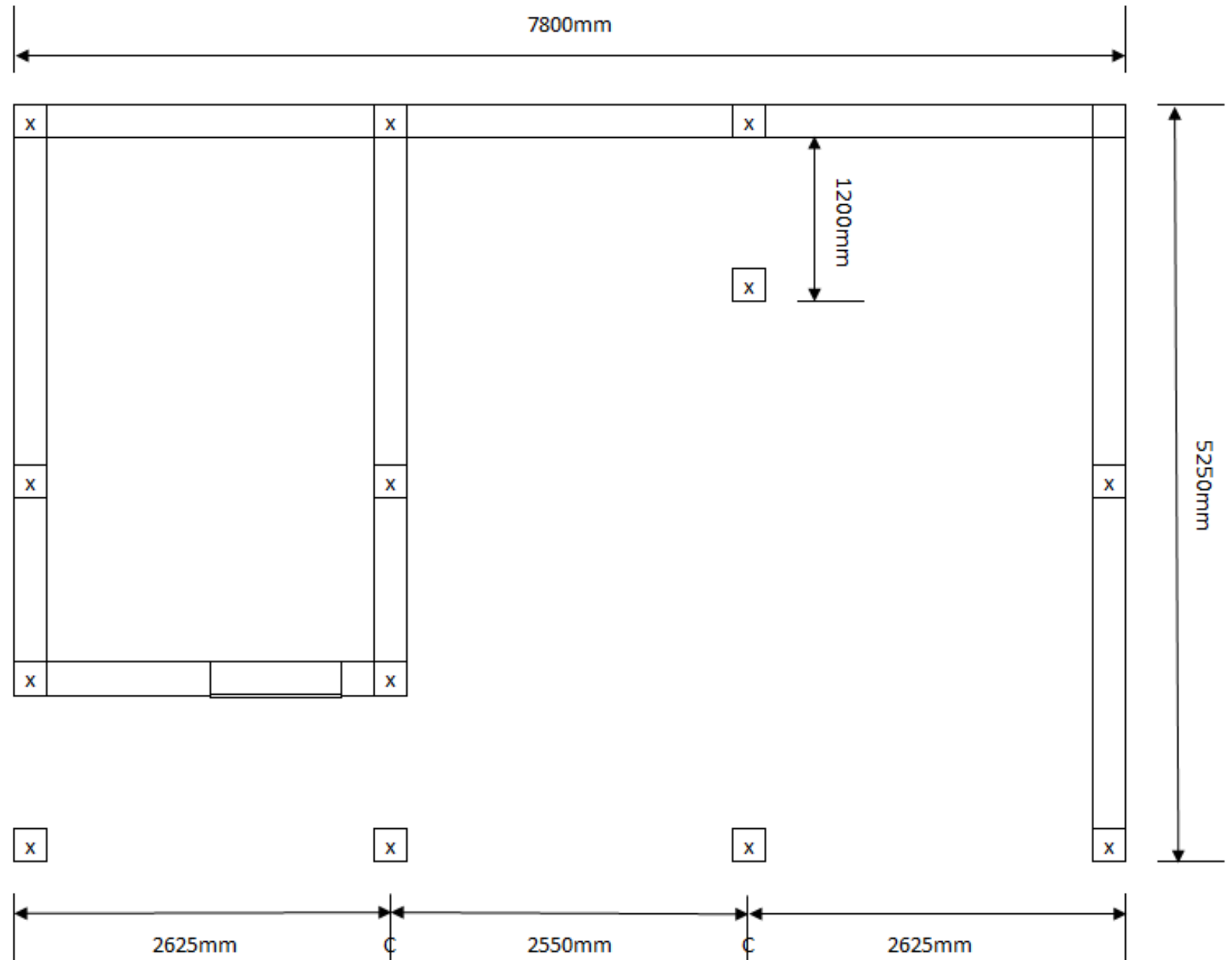
Wiltshire

Three Bay Car Barn with Stable Front



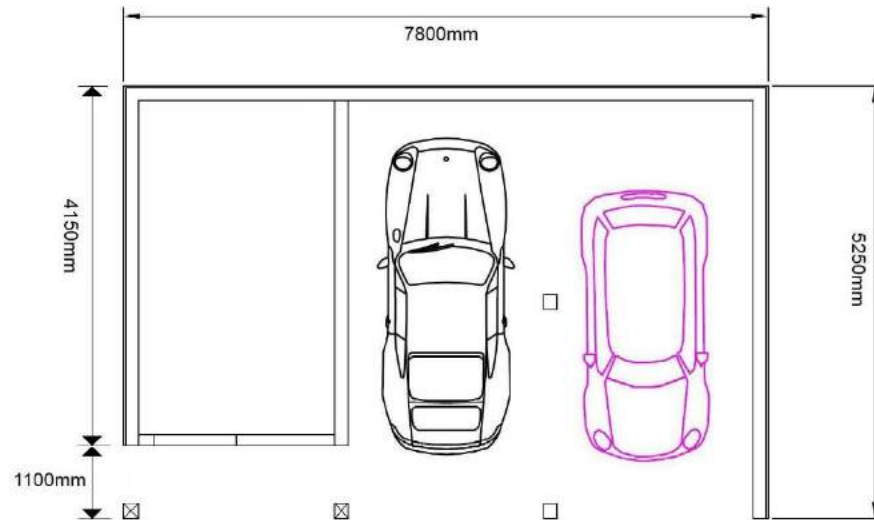
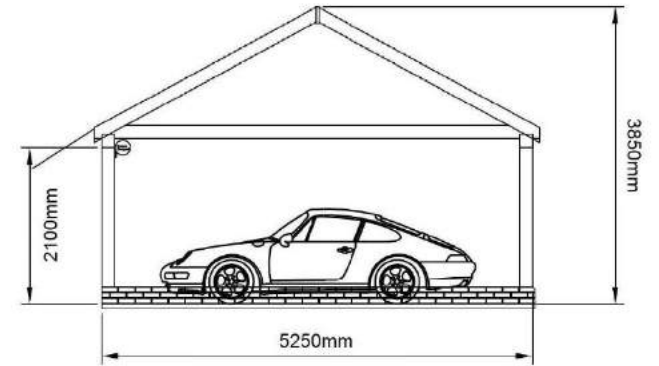
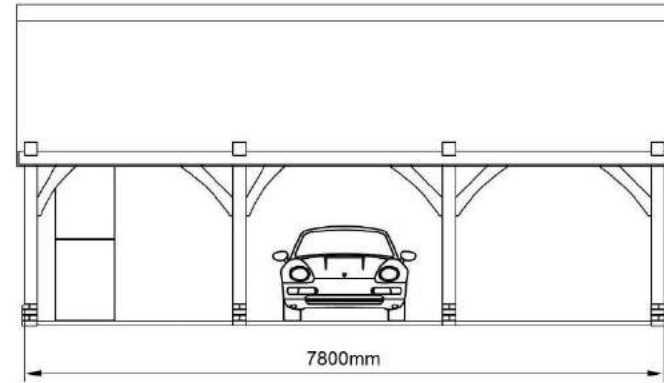
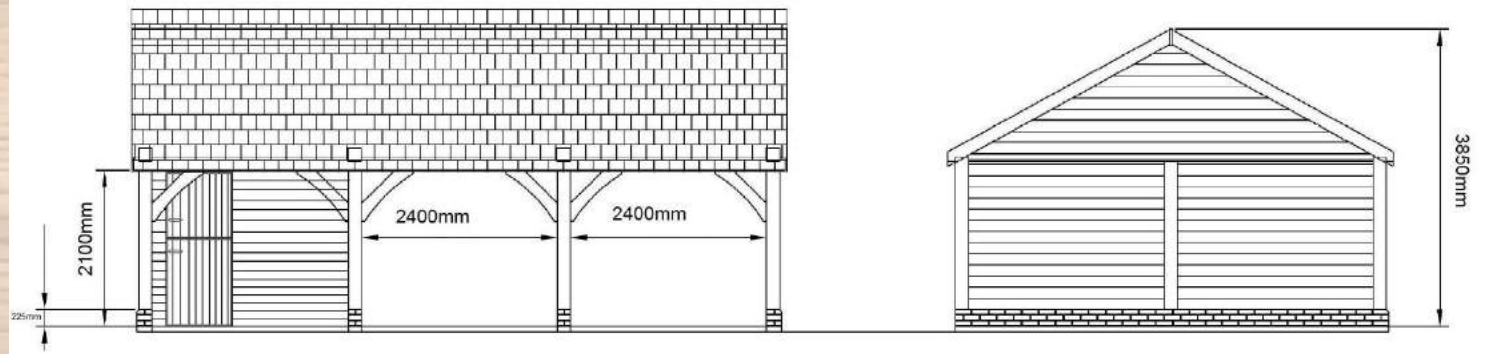
Base Plan

- This is the standard plan for the Wiltshire.
- If you are planning to put animals in the stable we can make it bigger to give them more room.
- The kit comes with a stable door, but we can change this to the standard pedestrian door if it is to be used as a store.



Elevation Plans

- These are the elevation plans for the Wiltshire.
- Please feel free to amend the plan to suit your needs and send back to us.



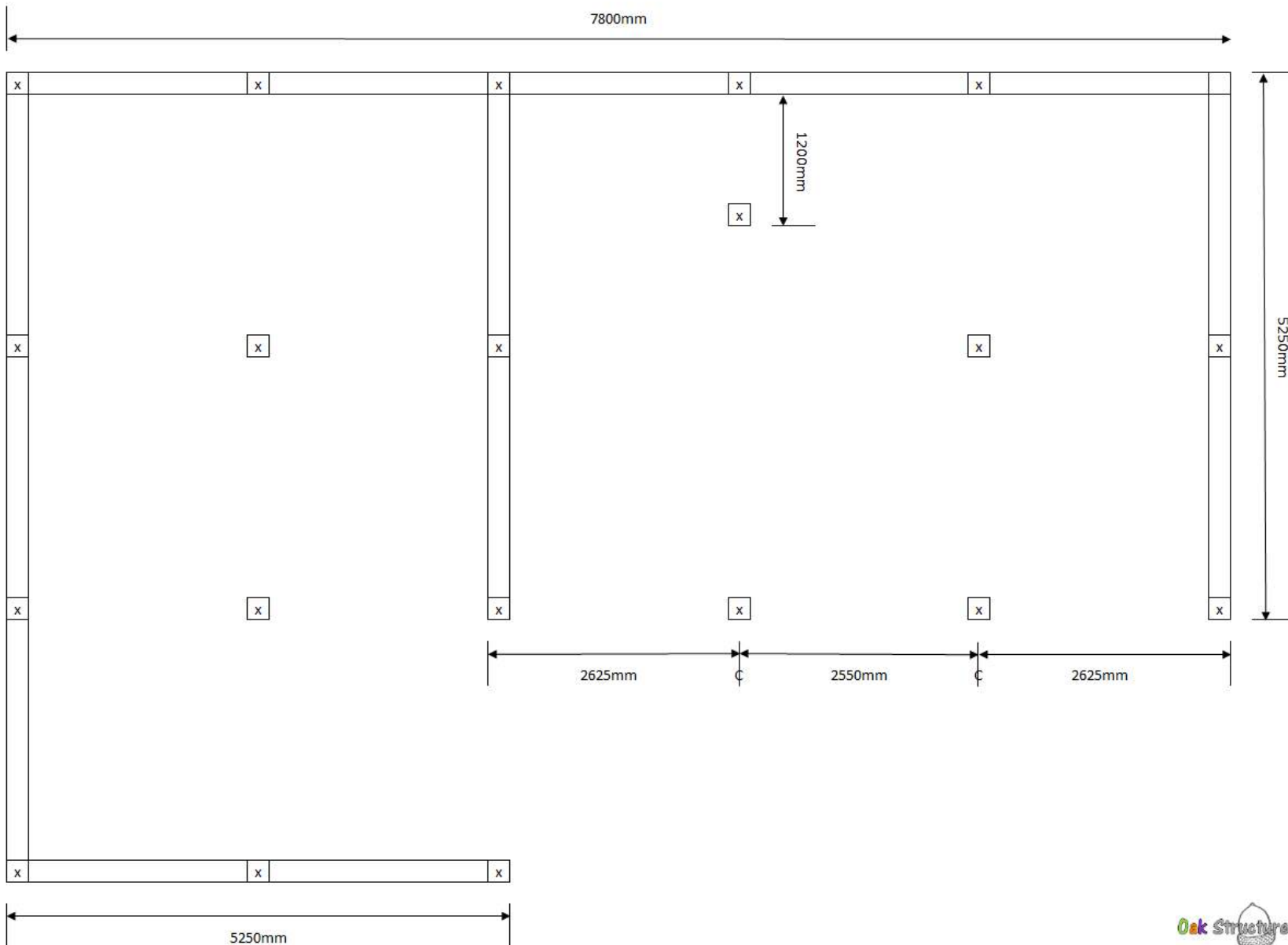


Oxfordshire

Six Bay L Shaped Car Barn



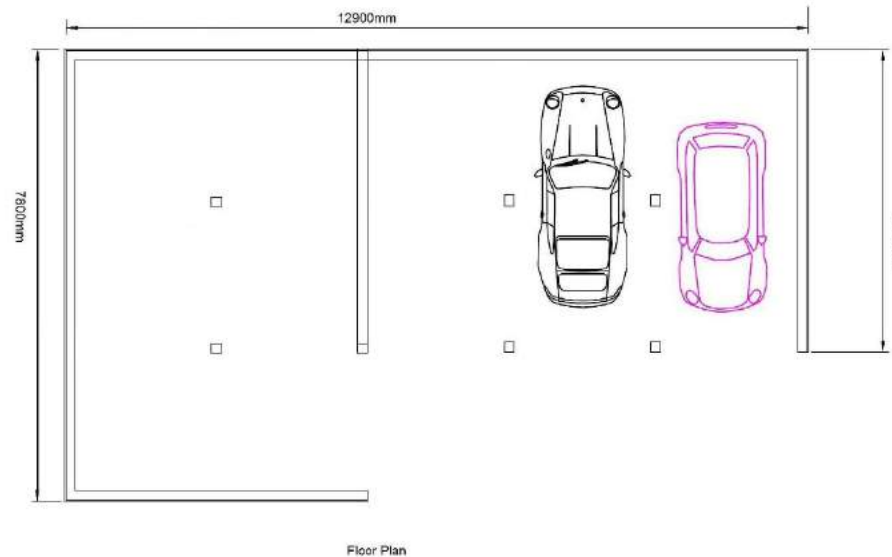
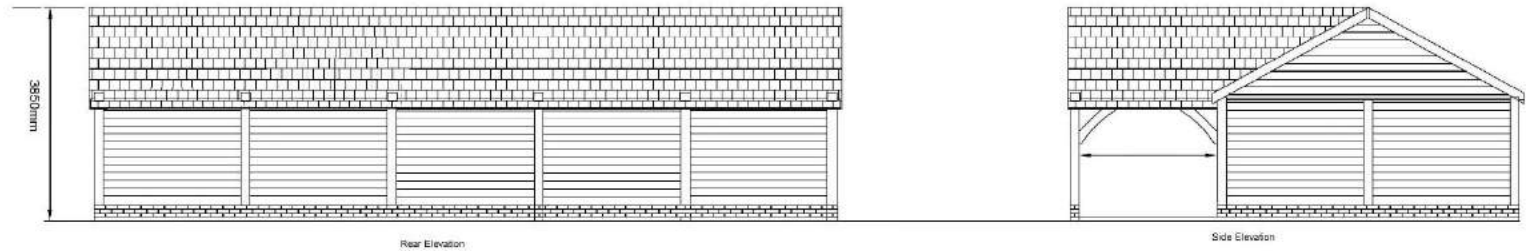
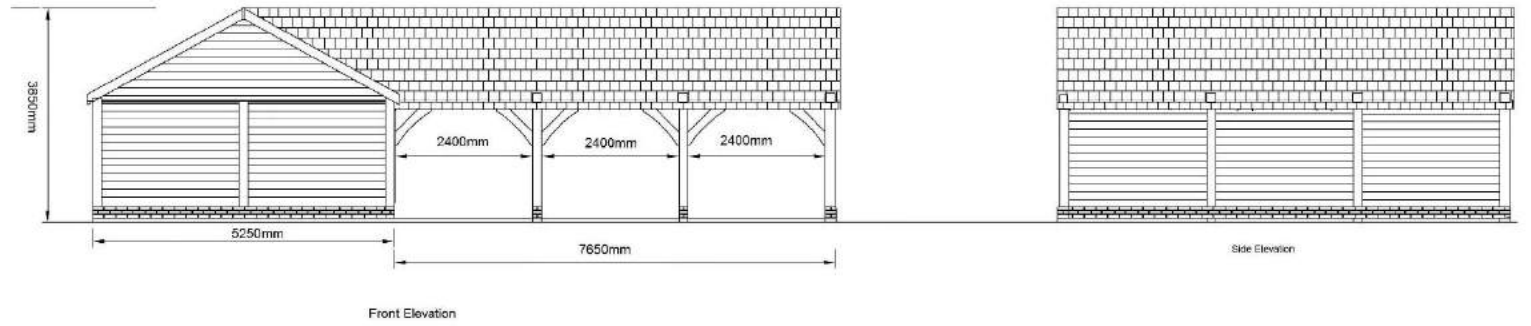
Base Plan



- This is a standard base plan for the Oxfordshire.
- The partition and openings can be changed to suit you.
- We are flexible with sizes, so if you need it bigger or smaller just let us know.

Elevation Plans

- These are the elevation plans for the Oxfordshire.
- Please feel free to amend the plan to suit your needs and send back to us.





Conservatories

We can make oak framed conservatories to suit your needs.

We have a standard size, but if you need something smaller or bigger we can work with you.



Bespoke Structures

These are a few bespoke structures that we have helped design and manufacture.

We made the summerhouse below for a local customer to put in his garden. Using the standard three bay as a starting point, we could use the flexibility of the design to create a unique building.



This was a single car barn with two log stores we delivered in Inverness. This picture was taken before the roof was completed, so it just has boards on.

Below is another single bay with two log stores in Wales. This time the store on the right has been enclosed to create a larger space inside.



Bespoke Structures



Another bespoke L shaped car barn - the pictures to the left and below show an office and workshop built in Kent.

The photo on the left gives a better view of the porch added to the entrance, and below you can see the large windows added for natural light.



The multiple bay building below is a perfect example of the flexibility of our kits. Additional bays and stable kits were added to our standard L shaped car barn to create the one off structure below.



Bespoke Structures

Below is a four bay built split into two sections in Somerset. The left hand side is a workshop and we put in a floor joist to allow us to remove the central post and put storage space above. The customer had his own doors to fit after we left.

The roofing was completed by us in cedar shingles.



Above is a 4.5 bay car barn, complete with a half hipped roof.

This was completed locally, and the final bay is half the normal size with a pedestrian door on the front to create a small storage area – this can be seen in more detail on the [extras page](#).

Bespoke Structures

Not all our bespoke structures are large buildings – here are smaller additions that can make a big difference to a house or garden.

This is a log store that was made to attach directly to a customers house. We can supply cedar shingles and saddles stones if required.



We created a small version of the car barn to be used as a dog run in the back garden of a customer.



Extras

- Logstore
 - ½ Bays
 - Garage or Pedestrian Doors
 - Partitions
 - Stables
 - Hipped or Half Hipped Roof
 - Choice of Cladding

 - Porch kits also available
- Saddle Stone
 - Cedar Shingles
 - Erection
 - Base (for local only)
 - Guttering



Contact

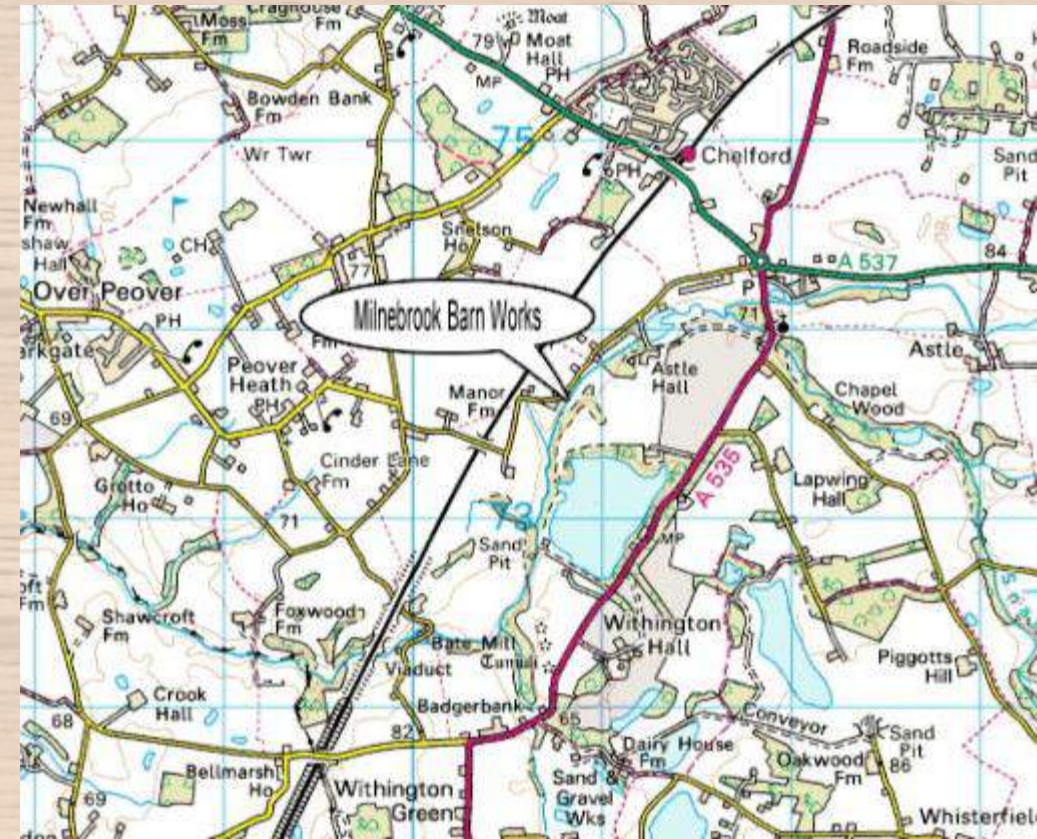
If you have any queries or want to discuss your project please get in touch.

- Sales and Marketing:
07553554440

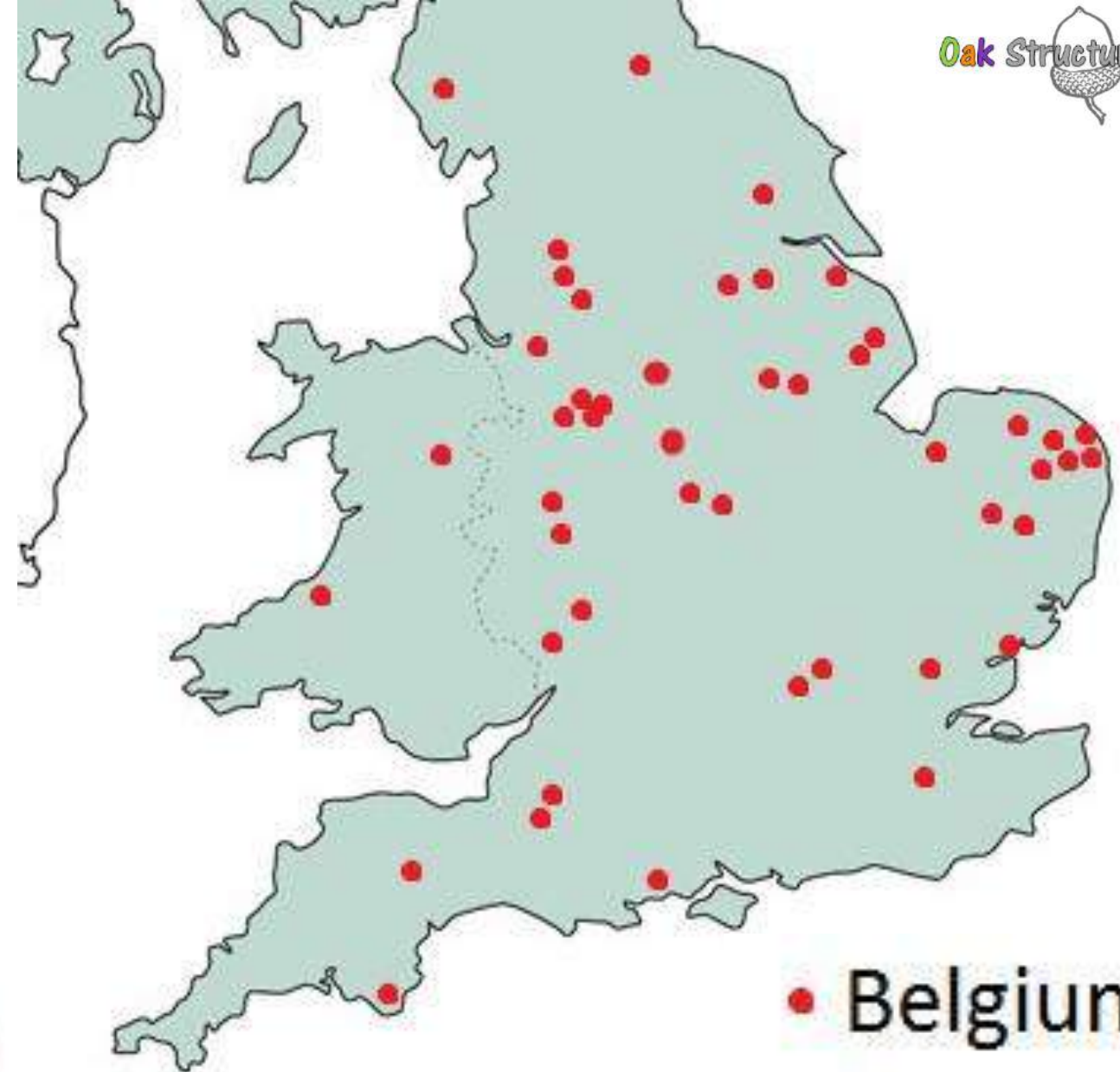
- IT and Technical:
Zara - 01625 861 626 (We aim to be in the office Mondays and Saturdays).

Please feel free to scribble any notes or amendments on our base plans to show your ideas.

Oak Structures Ltd
Milnebrook Barn,
Peover Lane,
Snelson nr Macclesfield,
Cheshire
SK11 9BR



Locations



- Belgium
- France